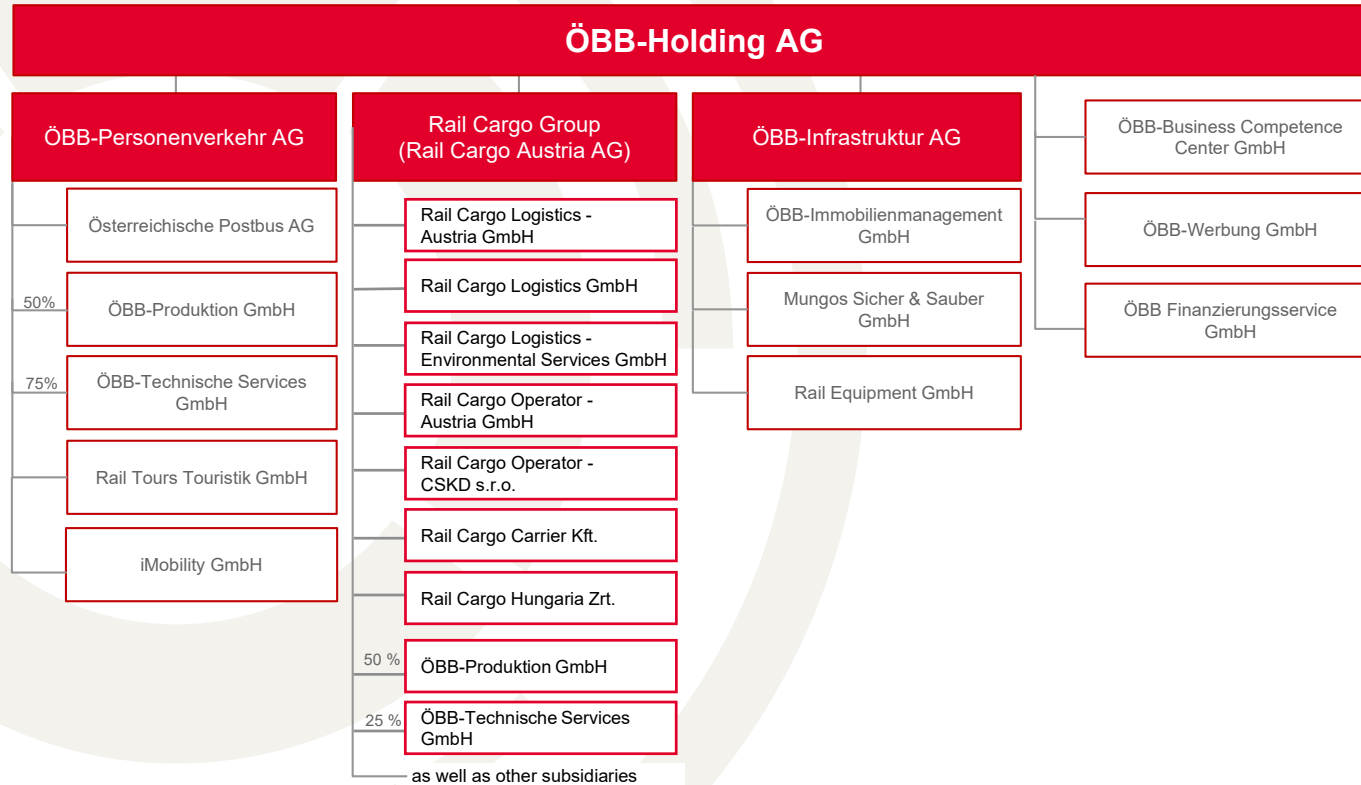




**Rail Cargo Group**

Reliable. Caring. Go-ahead.

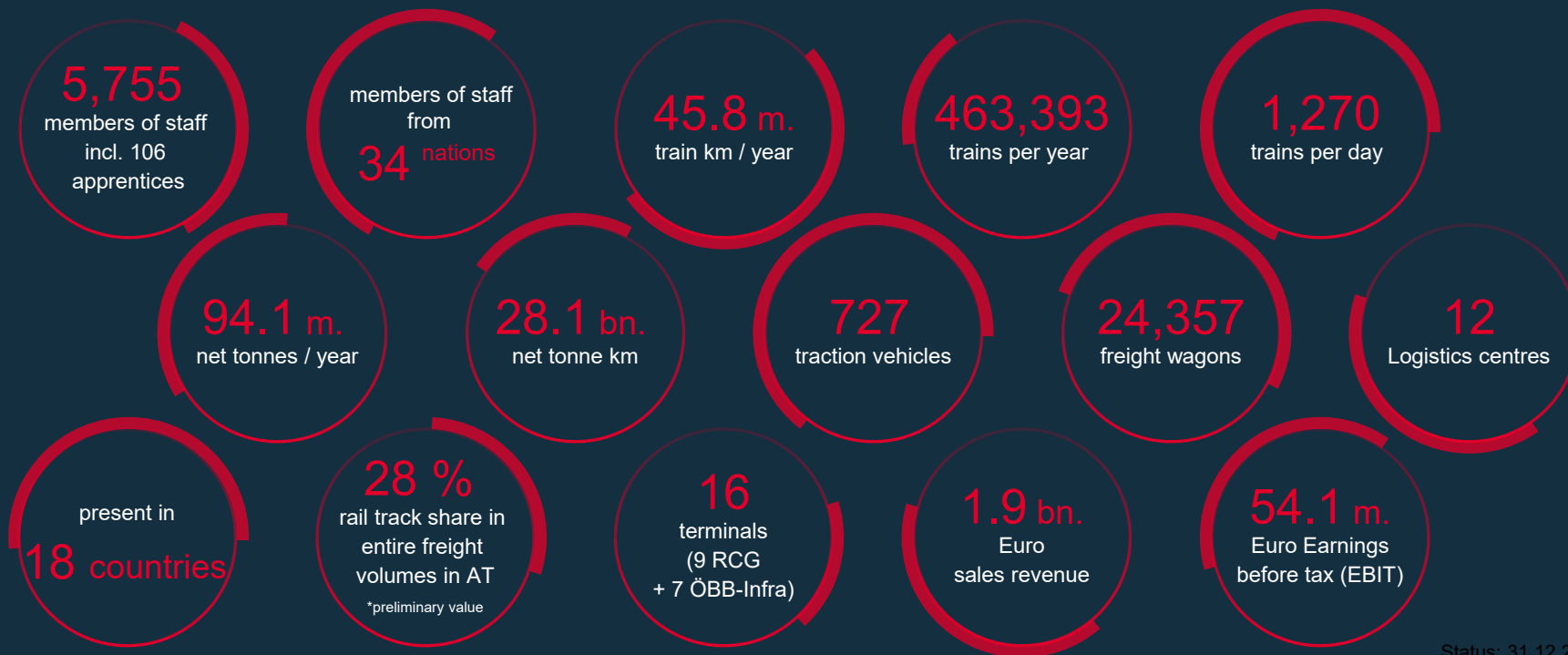
# The ÖBB Corporation



Status: July 2021

This organigram contains a sample of important subsidiaries within the ÖBB corporation.

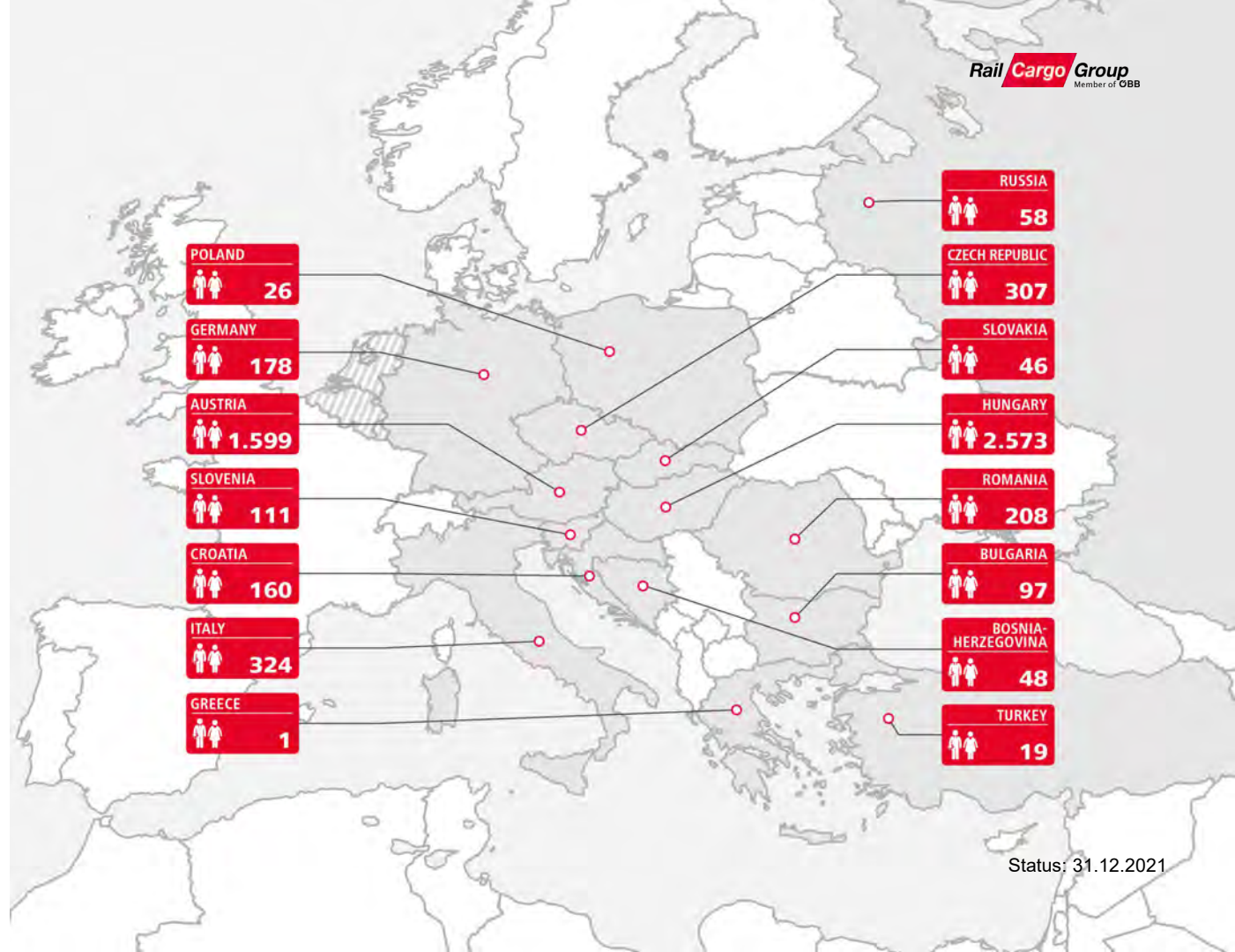
# Facts & Figures



Status: 31.12.2021

5,755 employees  
across Europe

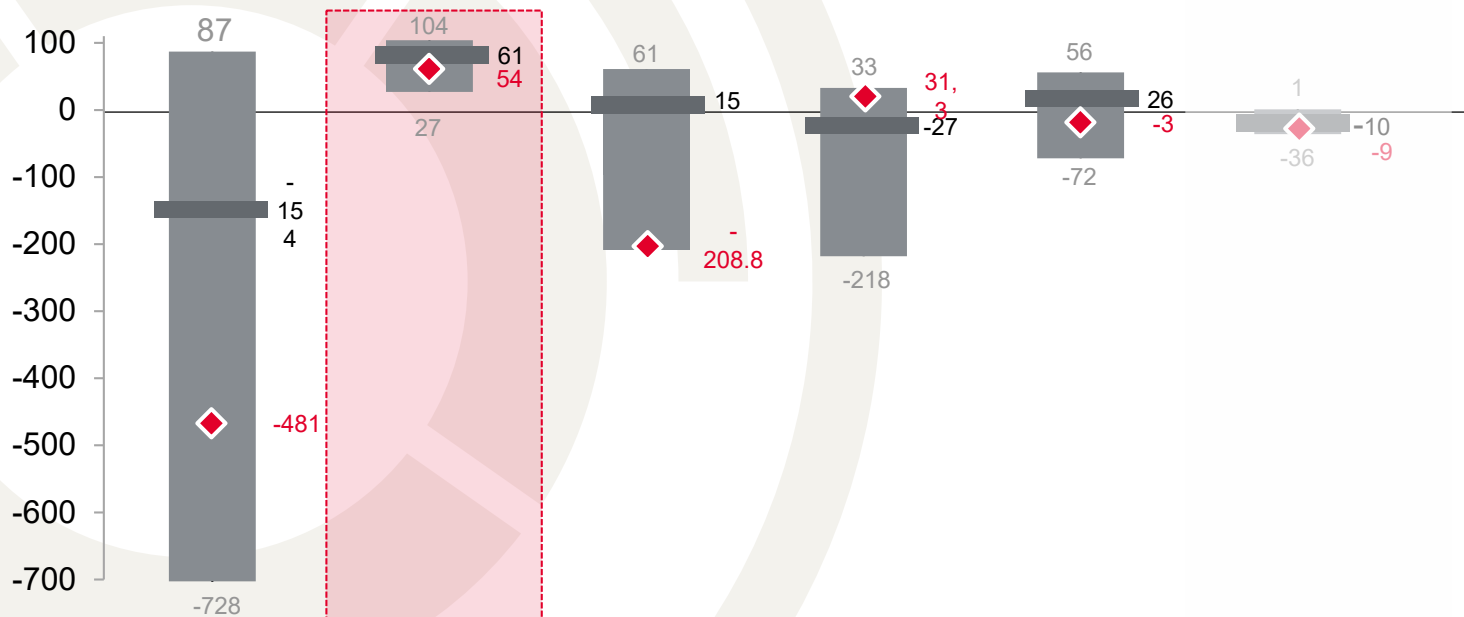
We are present in  
18 countries and in  
15 of those with our  
own employees.



Status: 31.12.2021

# The RCG in its European context

**EBIT development of selected railway undertakings**  
in m. EUR 2012-2021



Max  
 Ø  
 Min  
◆ 2021



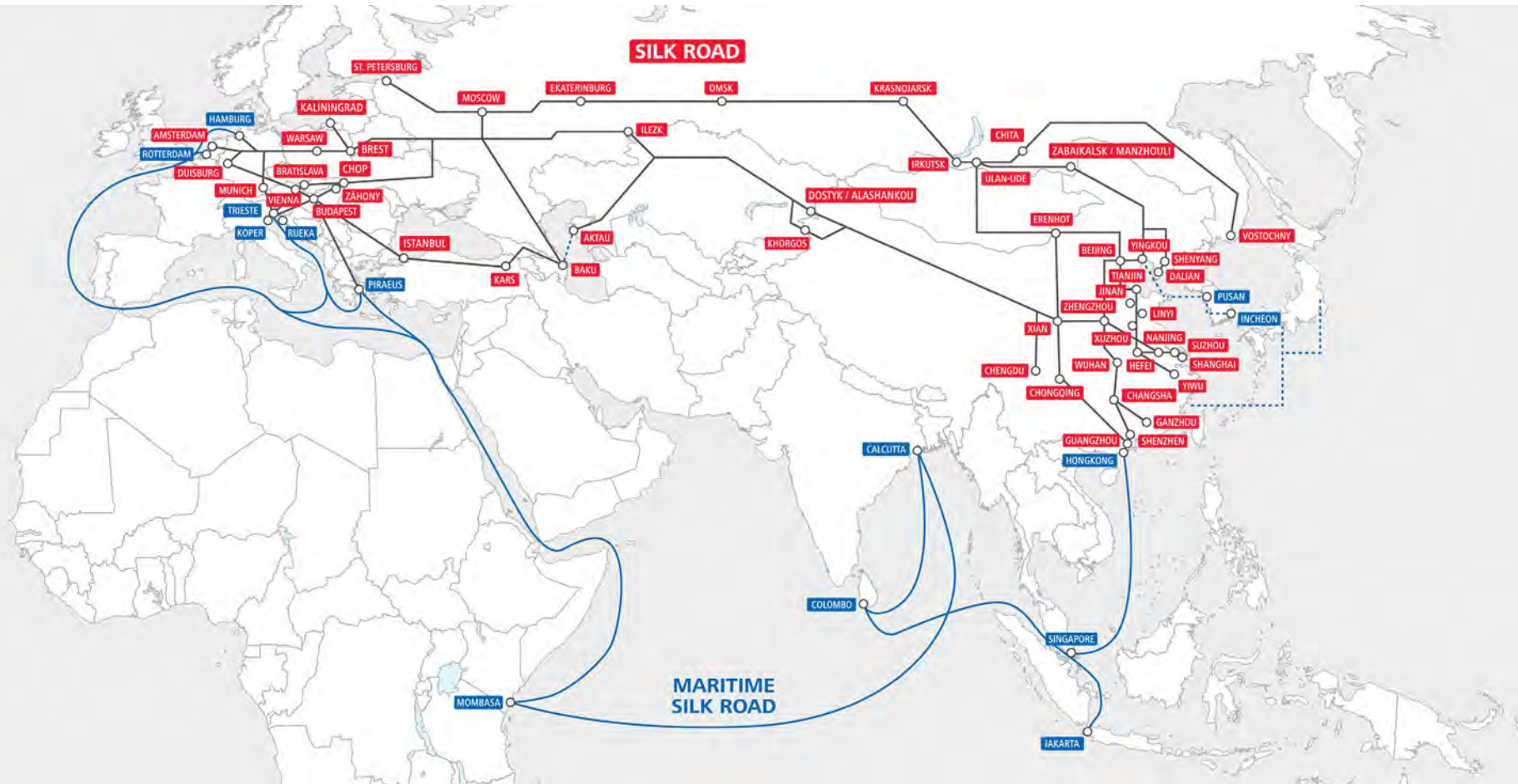
Status: 31.12.2021

Data subject to and according to available data (mainly based on annual financial reports available on the internet);  
 Conversion from PLN, CHF, SEK and CZK to Euro as of 31/12/2021  
 Data availability from 2013  
 Rail Cargo Group / Grow East Congress

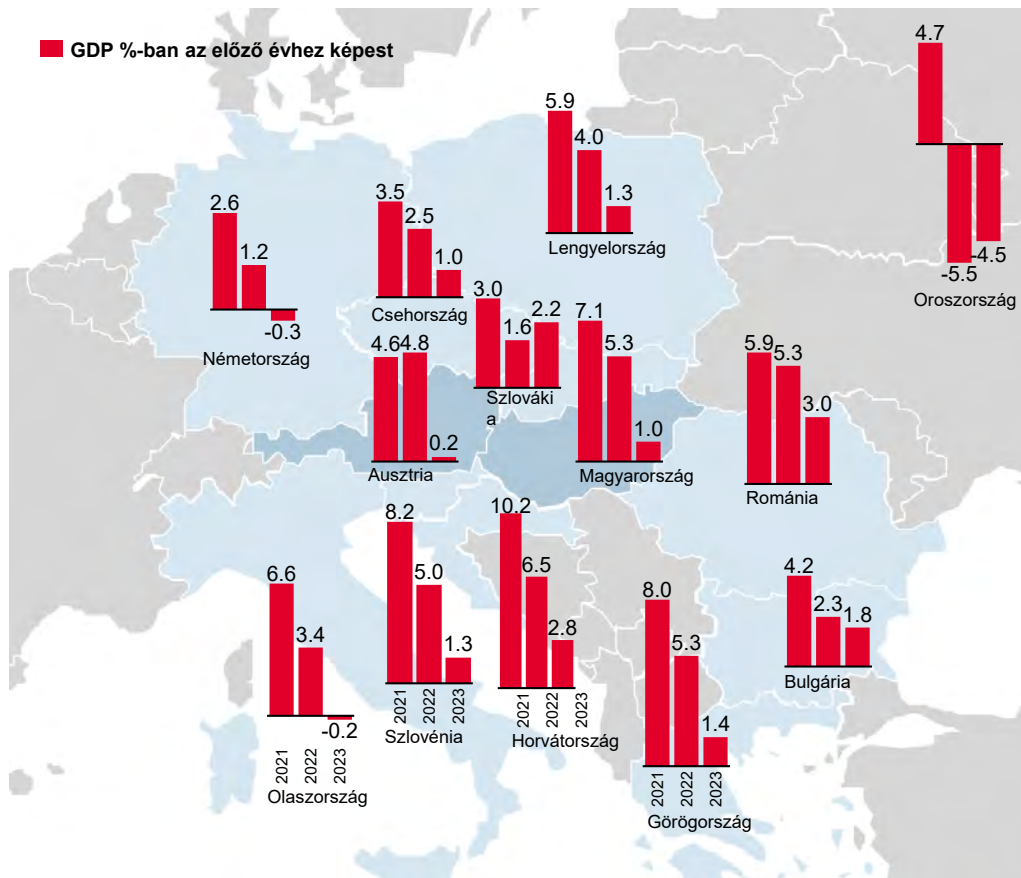
Data according to 2020  
 2021 not yet available

Data according to 2020  
 2021 not yet available

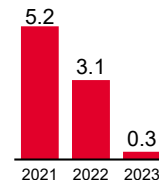
# TransNET – Our network of TransFER connections, combinations and individual routes from Europe all the way to Asia



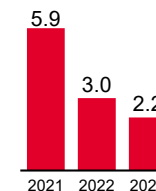
# Economic development in Europe



Eurozone



World economy



The war in Ukraine and the energy crisis mitigate once again the economic expectations, although this year's developments still look relatively positive in most countries.

However, for 2023, the forecasts have been significantly revised downwards, the **set-back of the growth in countries with a higher industrial ratio**, such as Germany, Italy, Hungary and Poland, is greater. A recession is expected even in Germany and Italy.

While growth is expected at the level of the world economy in 2023, signs point to stagnation in the Eurozone.

# The main challenges of 2022

- War in Ukraine



- Extremely high energy prices



- Railway track maintenance and renovations





## New logistics routes



# Transports to and from Ukraine

## Security of supply:

- Worldwide 50% of sunflower oil, 15% of corn and 12% of wheat **come from Ukraine.**

## Challenge:

- Export of ca. 20. million t grain from UA

Locally: to ensure money and storage space for the **next seed and harvest** RCG supports farmers

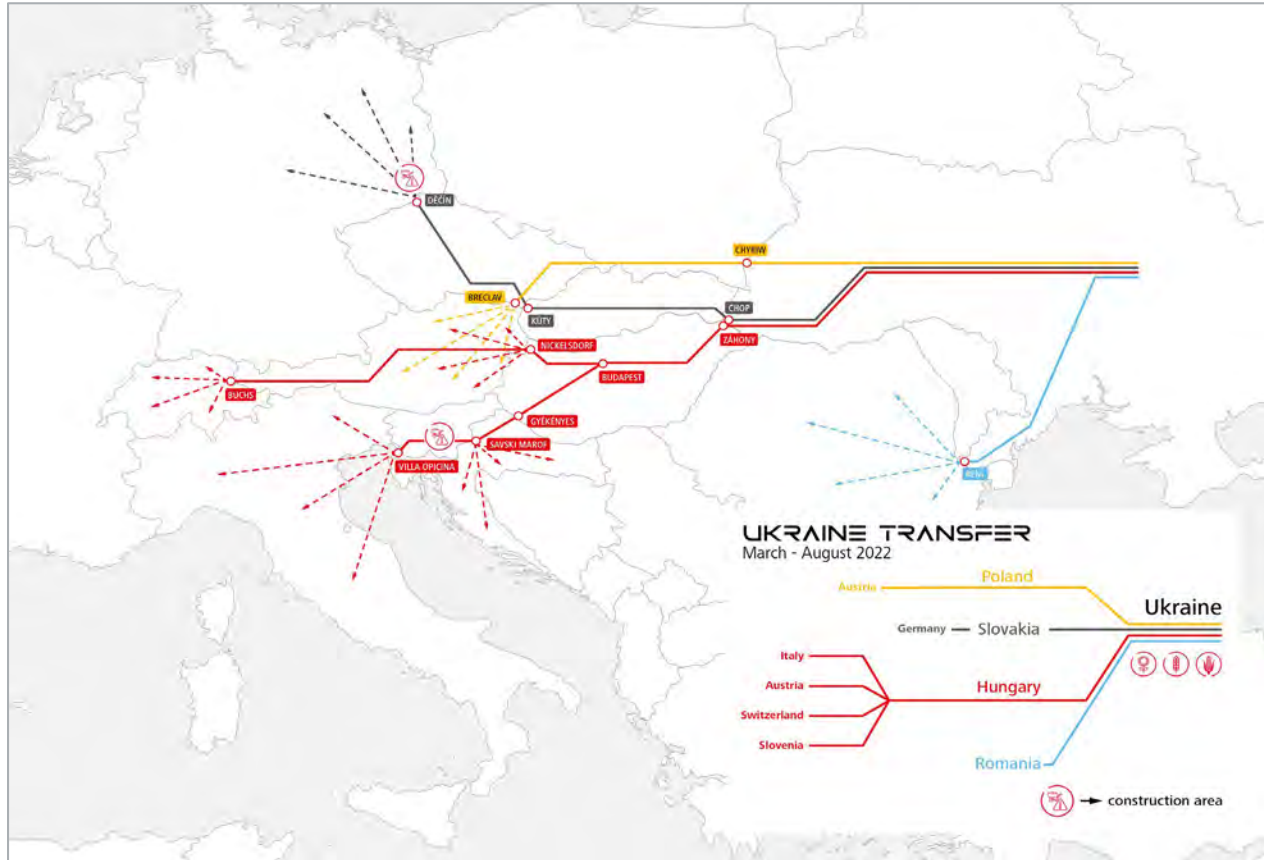
Globally: counteracting an increase in **food prices** that threatens the existence of many people – systemic relevance

## Establishment of GrainLane:


In order to keep **the industrial engine** running with transports (systemic relevance)

- GrainLane = Online market place for grain products
- GrainLane **connects Ukrainian farmers with retailers, consumers and logistics providers.**

# Ukraine | in December RCG reaches 1 million tonnes of grain transported



- After interruptions in grain transport from Ukraine due to the war, the transports shifted to the mainland routes.
- Transporting altogether 1 million tonnes of grain – main route via Hungary.
- Rail traffic is currently consistently high despite the reopening of the Black Sea ports, the highly cheap shipping deals and the increasing competition for European producers (especially Brazil).



**Thank you for your  
attention!**